

GRANITE STATE LANDFILL, LLC

WETLAND IMPACT PLANS

DALTON, NEW HAMPSHIRE
NOVEMBER 2023

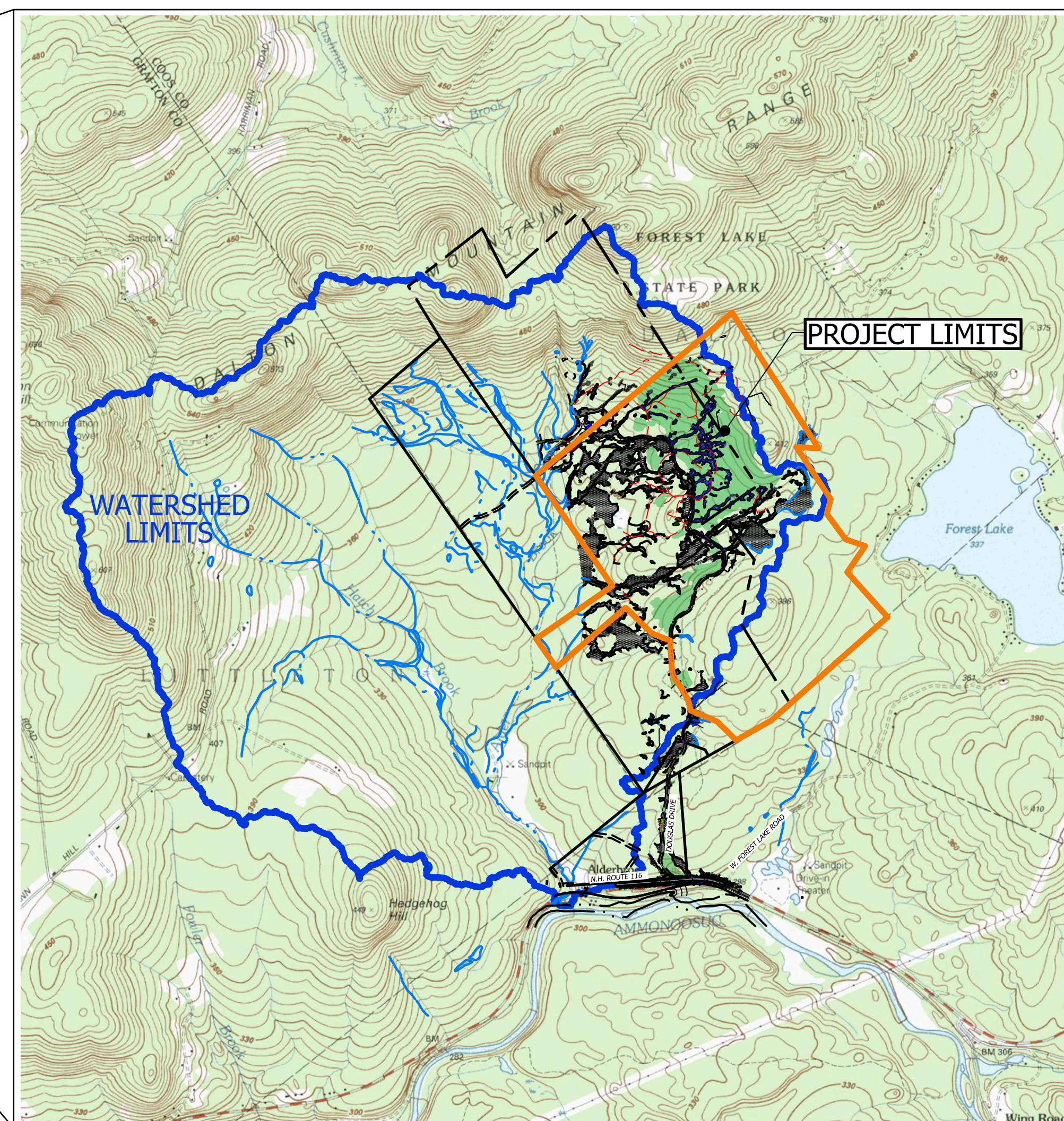
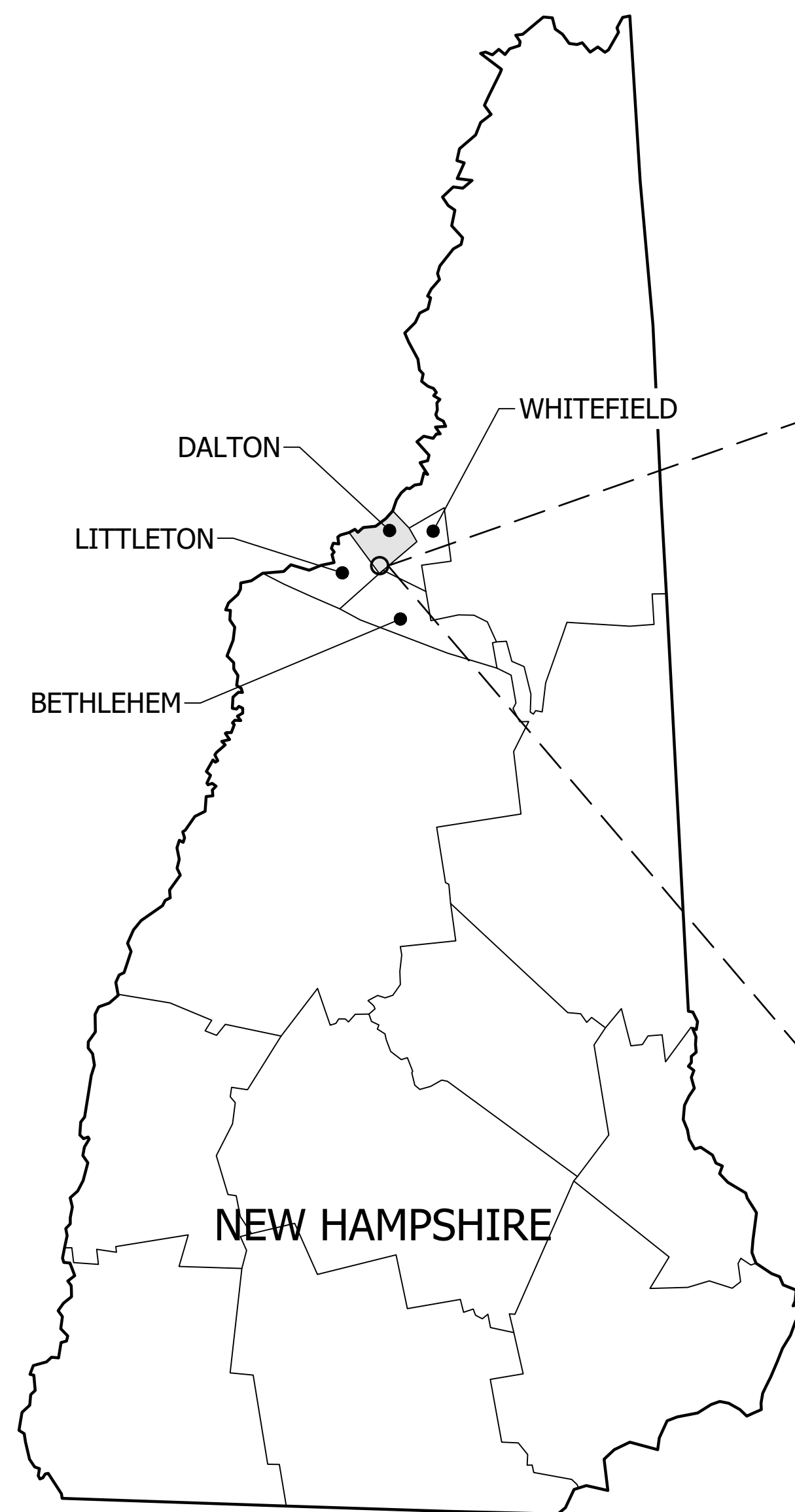
OWNER:
GRANITE STATE LANDFILL, LLC
1855 VT ROUTE 100
HYDE PARK, VT 05655
802.651.5454

DESIGN ENGINEER:
CMA ENGINEERS, INC.
PORTSMOUTH, NH 603.431.6196
MANCHESTER, NH 603.627.0708
PORTLAND, ME 207.541.4223

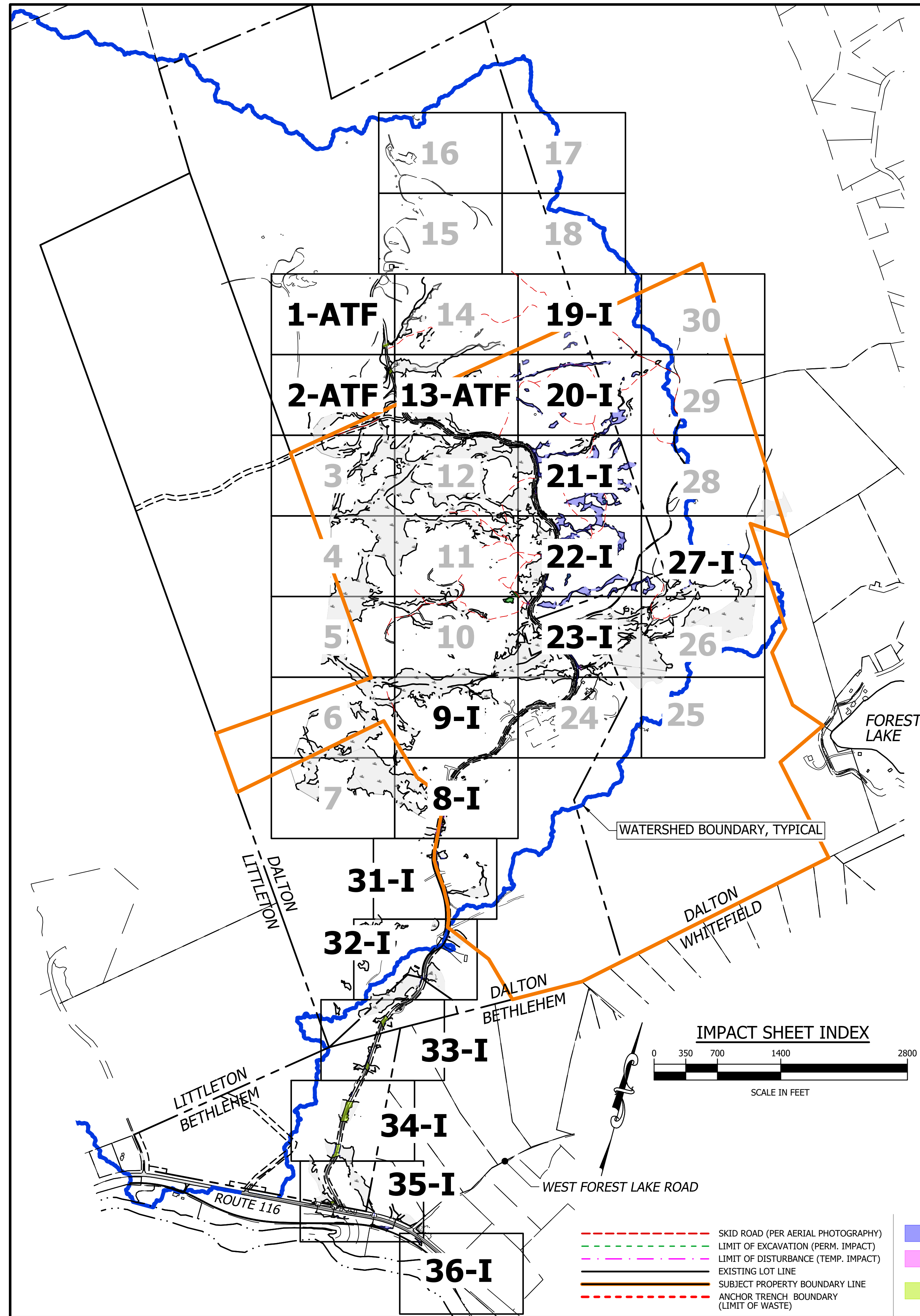
GEOTECHNICAL SUPPORT:
SANBORN, HEAD & ASSOCIATES, INC.
20 FOUNDRY STREET
CONCORD, NH 03301
603.229.1900

WETLAND SCIENTIST:
B.H.KEITH ASSOCIATES
11 ELM STREET
P.O. BOX 326
FREEDOM, NH 03836

SURVEYOR:
HORIZONS ENGINEERING, INC.
34 SCHOOL STREET
LITTLETON, NH 03561



LOCATION PLAN
SCALE: 1" = 2000'



WETLAND NOTES

STATE AND FEDERAL JURISDICTIONAL WETLANDS WERE DELINEATED DURING MAY 2018 THROUGH JULY 2023 BY N.H. CERTIFIED WETLAND SCIENTIST, BARRY H. KEITH. WETLANDS MAPPING WAS DONE BY N.H. LICENSED LAND SURVEYORS, HORIZONS ENGINEERING, INC. USING GLOBAL POSITIONING SURVEY (GPS) METHODS AND IN ACCORDANCE WITH THE FOLLOWING GUIDANCE DOCUMENTS:

- N.H. CODE OF ADMINISTRATIVE RULES (ENV-WT 406.01(a)) WITH THE TECHNIQUES OUTLINED IN THE 1987 "U.S. ARMY CORPS OF ENGINEERS WETLAND DELINEATION MANUAL, TECHNICAL REPORT Y-87-1."
- U.S. ARMY CORPS OF ENGINEERS. 2012. "REGIONAL SUPPLEMENT TO THE CORPS OF ENGINEERS WETLAND DELINEATION MANUAL: NORTH-CENTRAL AND NORTHEAST REGION (VERSION 2.0). U.S. ARMY CORPS OF ENGINEERS RESEARCH AND DEVELOPMENT CENTER, ENVIRONMENTAL LABORATORY ERDC/EL TR-09-19."
- U.S. ARMY CORPS OF ENGINEERS. 2016. "NATIONAL LIST OF PLANT SPECIES THAT OCCUR IN WETLANDS: "NORTH-CENTRAL AND NORTHEAST REGION (VERSION 3.3)", U.S. ARMY CORPS OF ENGINEERS RESEARCH AND DEVELOPMENT CENTER, ENVIRONMENTAL LABORATORY."
- U.S. FISH AND WILDLIFE SERVICE MANUAL FWS/OBS-79/31 ENTITLED "CLASSIFICATION OF WETLANDS AND DEEPWATER HABITATS OF THE UNITED STATES, COWARDIN ET AL, 1979."
- U.S.G.S. FEDERAL GEOGRAPHIC DATA COMMITTEE, 2013, CLASSIFICATION OF WETLANDS AND DEEPWATER HABITATS OF THE UNITED STATES, WETLAND SUBCOMMITTEE, RESTON, VA.
- NEW ENGLAND HYDRIC SOILS TECHNICAL COMMITTEE. 2017. 4th ED., "FIELD INDICATORS FOR IDENTIFYING HYDRIC SOILS IN NEW ENGLAND." NEW ENGLAND INTERSTATE WATER POLLUTION CONTROL COMMISSION, LOWELL, MA.
- U.S. DEPARTMENT OF AGRICULTURE, NATURAL RESOURCE CONSERVATION SERVICE. 2010. "FIELD INDICATORS OF HYDRIC SOILS IN THE UNITED STATES, VERSION 7.0." L.M. VASILAS, G.W. HURT, AND C.V. NOBLE (EDS.), USDA, NRCS, IN COOPERATION WITH THE NATIONAL TECHNICAL COMMITTEE FOR HYDRIC SOILS.

SURVEY NOTES

THE WETLANDS FLAGS AS DELINEATED WERE FIELD SURVEYED BY REAL-TIME KINEMATIC GPS METHODS IN A BASE/ROVER CONFIGURATION WITH A BASE POSITION ESTABLISHED WITH THE ONLINE USER POSITIONING SERVICE, OR BY SUB-METER HANDHELD GPS METHODS USING A TRIMBLE GEOXH UNIT AND DIFFERENTIALLY CORRECTED WITH POST PROCESSING. ALL POSITIONS ARE BASED ON THE NEW HAMPSHIRE COORDINATE SYSTEM, NAD83 (GRID NORTH).

DESIGN REFERENCE

ROAD, LANDFILL AND POND AREAS SHOWN ON THESE PLANS WERE DEVELOPED BY CMA ENGINEERS, INC. PLAN SET IS TITLED, "GRANITE STATE LANDFILL, LLC, GRANITE STATE LANDFILL, DALTON, NEW HAMPSHIRE, STANDARD DREDGE AND FILL WETLANDS PERMIT APPLICATION, SUBMITTED TO NHDES WETLANDS BUREAU - NOVEMBER 2023.

WETLAND CLASSIFICATION LEGEND

SYSTEM, CLASS, SUBCLASS, WATER REGIME

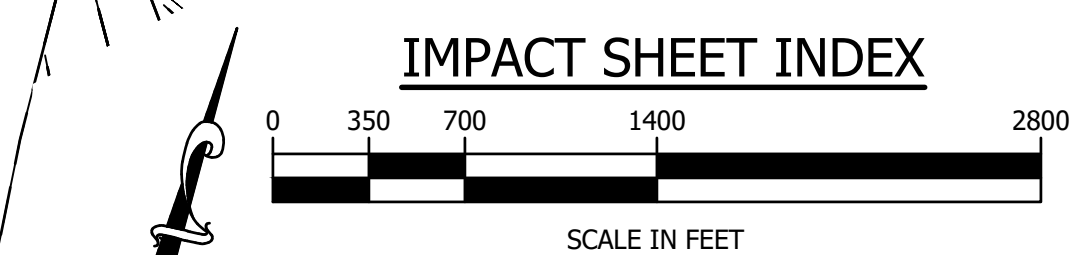
- PFO1E - PALUSTRINE FORESTED BROAD-LEAVED DECIDUOUS, SEASONALLY FLOODED/SATURATED
 - PFO1/4E - PALUSTRINE FORESTED BROAD-LEAVED DECIDUOUS/NEEDLE-LEAVED EVERGREEN, SEASONALLY FLOODED/SATURATED
 - PFO4/1E - PALUSTRINE FORESTED NEEDLE-LEAVED EVERGREEN/BROAD-LEAVED DECIDUOUS, SEASONALLY FLOODED/SATURATED
 - PSS1E - PALUSTRINE SCRUB-SHRUB BROAD-LEAVED DECIDUOUS, SEASONALLY FLOODED/SATURATED
 - PSS/FO1E - PALUSTRINE SCRUB-SHRUB/FORESTED, BROAD-LEAVED DECIDUOUS, SEASONALLY FLOODED/SATURATED
 - PSS/FO1/4E - PALUSTRINE SCRUB-SHRUB/FORESTED, BROAD-LEAVED DECIDUOUS/NEEDLE-LEAVED EVERGREEN, SEASONALLY FLOODED/SATURATED
 - PSS/FO4/1E - PALUSTRINE SCRUB-SHRUB/FORESTED, NEEDLE-LEAVED EVERGREEN/BROAD-LEAVED DECIDUOUS, SEASONALLY FLOODED/SATURATED
 - PSS1/FO5E - PALUSTRINE SCRUB-SHRUB, BROAD-LEAVED DECIDUOUS/FORESTED, DEAD, SEASONALLY FLOODED/SATURATED
 - PEM1E - PALUSTRINE PERSISTENT EMERGENT, SEASONALLY FLOODED/SATURATED
 - PEM/SS1E - PALUSTRINE PERSISTENT EMERGENT/SCRUB-SHRUB, BROAD-LEAVED DECIDUOUS, SEASONALLY FLOODED/SATURATED
 - POW - PALUSTRINE OPEN WATER
 - R3UBH - RIVERINE UPPER PERENNIAL, UNCONSOLIDATED BOTTOM, PERMANENTLY FLOODED
 - R4UBJ - RIVERINE INTERMITTENT, UNCONSOLIDATED BOTTOM, INTERMITTENTLY FLOODED
- U - UPLAND
- SPECIAL MODIFIERS**
- d - PARTIALLY DRAINED/DITCHED
 - h - DIKED/IMPOUNDED
 - r - ARTIFICIAL SUBSTRATE
 - b - BEAVER
 - x - EXCAVATED

NO.	DATE	REVISION DESCRIPTION
19045	NOVEMBER 2023	



horizons Engineering
 Engineering - Land Surveying - Environmental
 MAINE • NEW HAMPSHIRE • VERMONT
 www.horizonsengineering.com

GRANITE STATE LANDFILL, LLC
 DALTON, NEW HAMPSHIRE
 WETLAND IMPACT PLANS
 WETLAND CLASSIFICATIONS AND NOTES
 SHEET INDEX



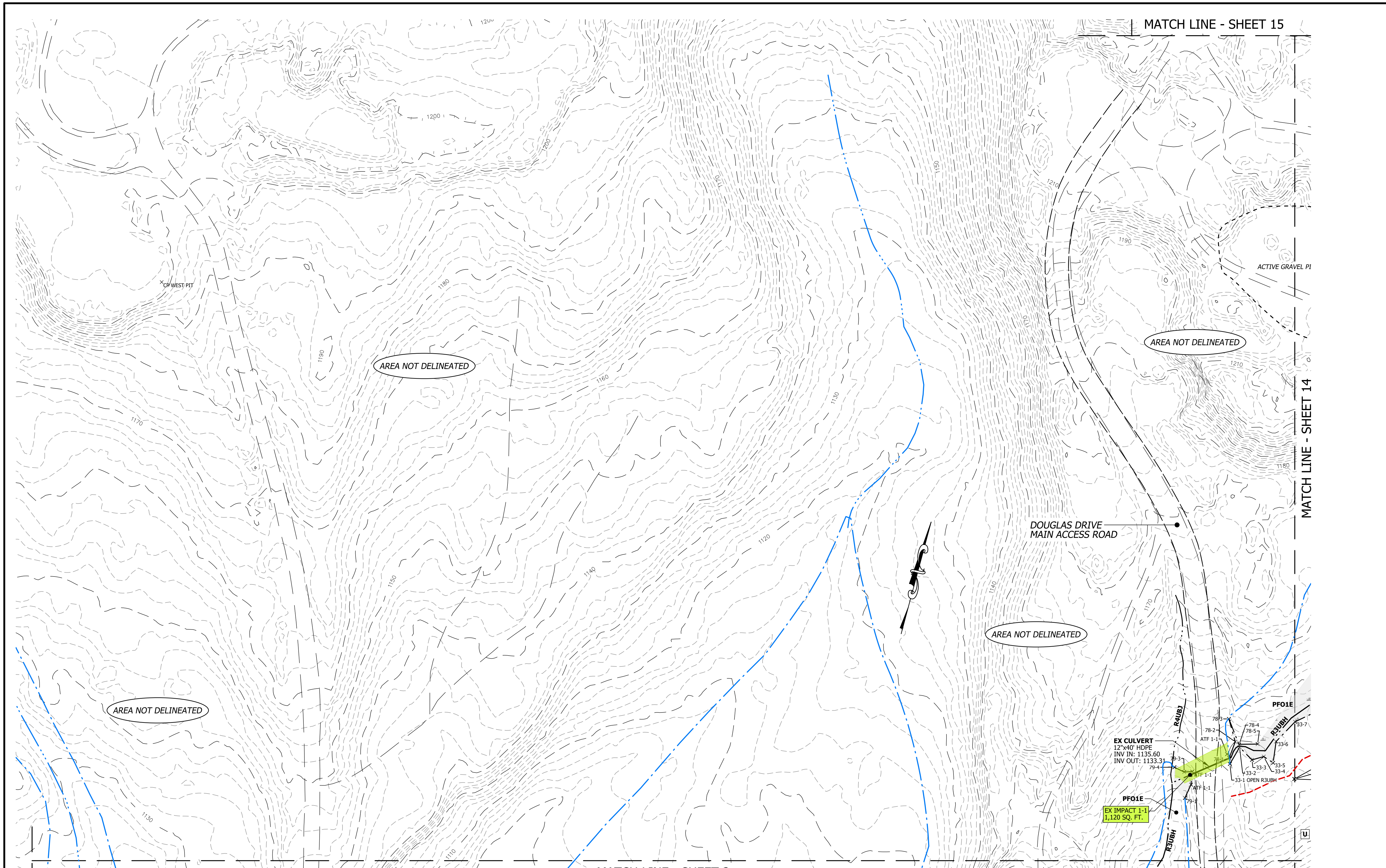
IMPACT(S) ON SHEET

- SKID ROAD (PER AERIAL PHOTOGRAPHY)
- LIMIT OF EXCAVATION (PERM. IMPACT)
- LIMIT OF DISTURBANCE (TEMP. IMPACT)
- EXISTING LOT LINE
- SUBJECT PROPERTY BOUNDARY LINE
- ANCHOR TRENCH BOUNDARY (LIMIT OF WASTE)
- PERMANENT WETLAND IMPACT
- TEMPORARY WETLAND IMPACT
- EXISTING WETLAND IMPACT FOR AFTER THE FACT PERMIT

LEGEND

- PERENNIAL STREAM
- INTERMITTENT STREAM
- EPHEMERAL FLOW
- FLOW DIRECTION
- WETLAND DELINEATION LINE
- WETLAND CLASSIFICATION
- GRAVEL ROAD
- MINOR CONTOUR (2')
- MAJOR CONTOUR (10')
- APPROXIMATE LOCATIONS (NOT FLAGGED)
- WETLAND AREA
- PERENNIAL STREAM
- INTERMITTENT STREAM
- EPHEMERAL FLOW
- BEAVER DAM
- UPLAND
- MONITORING WELL
- GROUNDWATER SEEP
- FLAG POINT AND ID # (STRING# & FLAG #)

DATE OF PRINT
 NOVEMBER 28 2023
 HORIZONS ENGINEERING



MATCH LINE - SHEET 15

MATCH LINE - SHEET 14

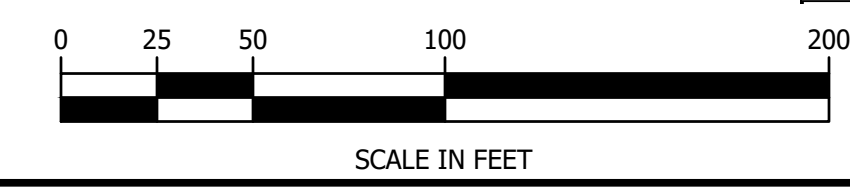
MATCH LINE - SHEET 2

- SKID ROAD (PER AERIAL PHOTOGRAPHY)
- LIMIT OF EXCAVATION (PERM. IMPACT)
- LIMIT OF DISTURBANCE (TEMP. IMPACT)
- EXISTING LOT LINE
- SUBJECT PROPERTY BOUNDARY LINE
- ANCHOR TRENCH BOUNDARY (LIMIT OF WASTE)
- PERMANENT WETLAND IMPACT
- TEMPORARY WETLAND IMPACT
- EXISTING WETLAND IMPACT FOR AFTER THE FACT PERMIT

- LEGEND**
- PERENNIAL STREAM
 - INTERMITTENT STREAM
 - EPHEMERAL FLOW
 - FLOW DIRECTION
 - WETLAND DELINEATION LINE
 - WETLAND CLASSIFICATION

- GRAVEL ROAD
- MINOR CONTOUR (2')
- MAJOR CONTOUR (10')
- APPROXIMATE LOCATIONS (NOT FLAGGED)
- WETLAND AREA
- PERENNIAL STREAM
- INTERMITTENT STREAM
- EPHEMERAL FLOW

- X-X-X-X-X BEAVER DAM
- U UPLAND MONITORING WELL
- GROUNDWATER SEEP
- FLAG POINT AND ID # (STRING# & FLAG #)

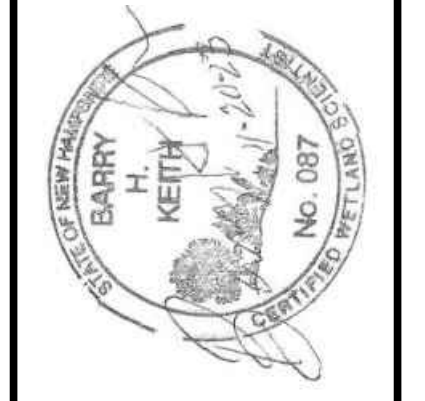


Impact -No.	Impact Classification	Linear feet	Permanent (sq. ft.)	Temporary (sq. ft.)
(design linework dated August 9, 2023)				
1-1	PFO1E		1,120	
Total Existing (after the fact) Impacts			1,120	

DATE OF PRINT
NOVEMBER 28 2023
 HORIZONS ENGINEERING



PROJECT #:	NO.	DATE	REVISION DESCRIPTION	ENG	DWG
19045	1	03/2021	ADDED EXISTING WETLAND DISTURBANCES FOR AFTER THE FACT PERMIT	BHK	KRP
DATE:	NOVEMBER 2023				
SURVEYED BY:	HEI				
ENGINEERED BY:	BHK				
DRAWN BY:	SIB/BDD/KRP				
CHECKED BY:	ESP/BHK				



horizons Engineering
 Engineering - Land Surveying - Environmental
 MAINE • NEW HAMPSHIRE • VERMONT
 www.horizonsengineering.com

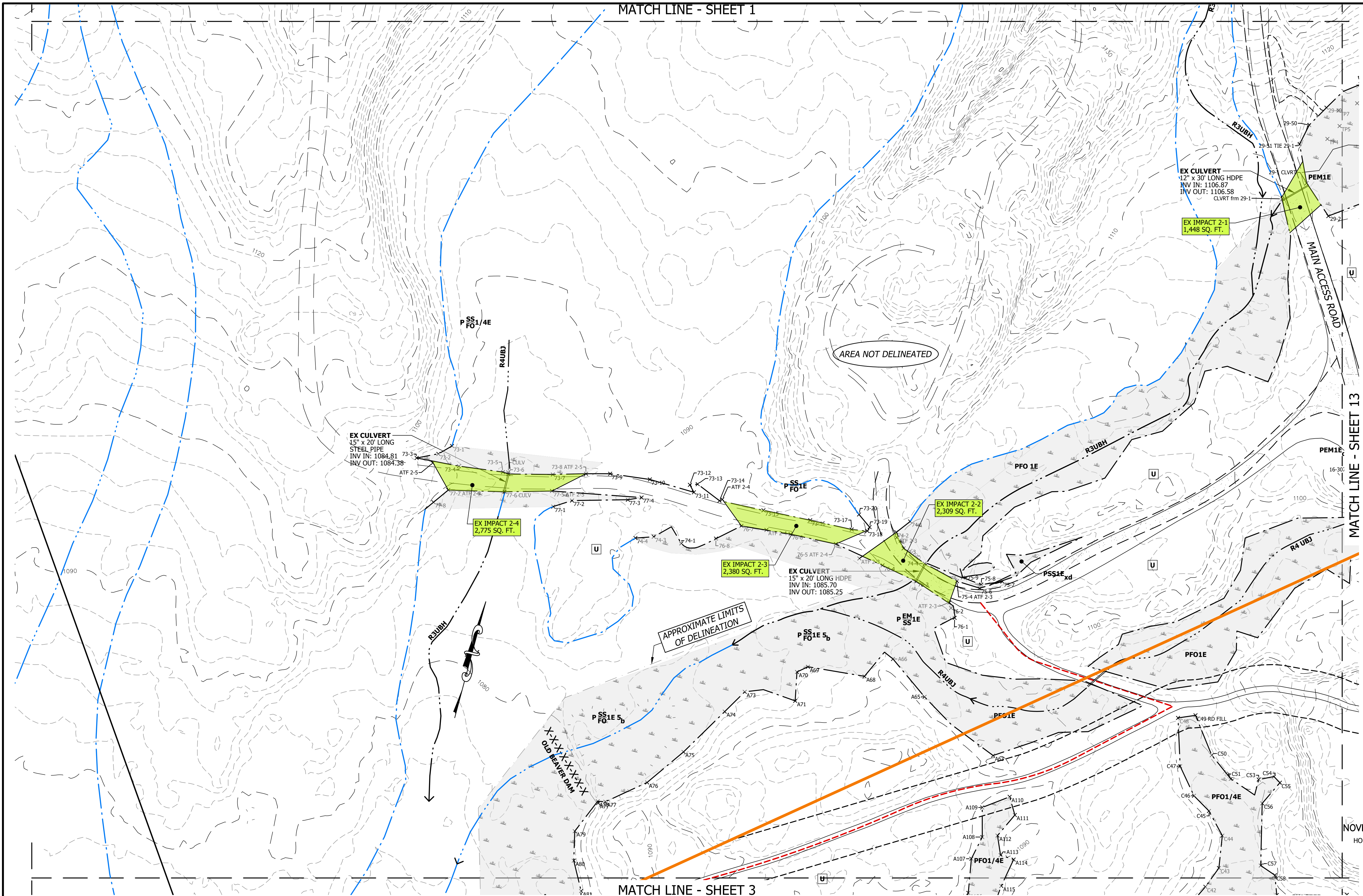
GRANITE STATE LANDFILL, LLC
 DALTON, NEW HAMPSHIRE
 WETLAND IMPACT PLANS
 WETLAND MAPPING PLAN
SHEET 1 IMPACT

Z:\proj_2019\19045_NCS - Dalton\DWG\Final\19045_Wet_Layouts\20.dwg, 11-28-2023 3:54:05 PM

MATCH LINE - SHEET 1

MATCH LINE - SHEET 13

MATCH LINE - SHEET 3



AREA NOT DELINEATED

APPROXIMATE LIMITS OF DELINEATION

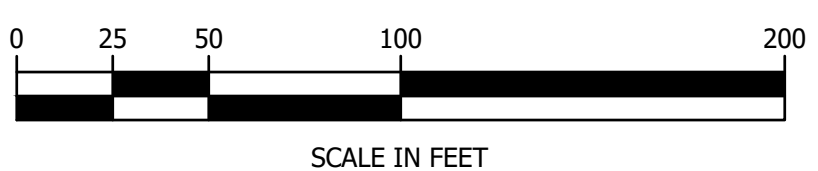
LEGEND

- SKID ROAD (PER AERIAL PHOTOGRAPHY)
- LIMIT OF EXCAVATION (PERM. IMPACT)
- LIMIT OF DISTURBANCE (TEMP. IMPACT)
- EXISTING LOT LINE
- SUBJECT PROPERTY BOUNDARY LINE
- ANCHOR TRENCH BOUNDARY (LIMIT OF WASTE)
- PERMANENT WETLAND IMPACT
- TEMPORARY WETLAND IMPACT
- EXISTING WETLAND IMPACT FOR AFTER THE FACT PERMIT

- PERENNIAL STREAM
- INTERMITTENT STREAM
- EPHEMERAL FLOW
- WETLAND DELINEATION LINE
- WETLAND CLASSIFICATION

- GRAVEL ROAD
- MINOR CONTOUR (2')
- MAJOR CONTOUR (10')
- APPROXIMATE LOCATIONS (NOT FLAGGED)
- WETLAND AREA
- PERENNIAL STREAM
- INTERMITTENT STREAM
- EPHEMERAL FLOW

- BEAVER DAM
- UPLAND
- MONITORING WELL
- GROUNDWATER SEEP
- FLAG POINT AND ID # (STRING # & FLAG #)



Impact -No.	Impact Classification	Linear feet	Permanent (sq. ft.)	Temporary (sq. ft.)
2-1	PEM1E		1,448	
2-2	PEM1E		2,309	
2-3	PFO1E		2,380	
2-4	PSS/FO 1E		2,775	
Total Existing (after the fact) Impacts			8,912	

DATE OF PRINT
NOVEMBER 28 2023
HORIZONS ENGINEERING

NO.	DATE	REVISION DESCRIPTION
1	03/2021	ADDED EXISTING WETLAND DISTURBANCES FOR AFTER THE FACT PERMIT



horizons Engineering
 Engineering - Land Surveying - Environmental
 MAINE • NEW HAMPSHIRE • VERMONT
 www.horizonsengineering.com

GRANITE STATE LANDFILL, LLC
 DALTON, NEW HAMPSHIRE
 WETLAND IMPACT PLANS
 WETLAND MAPPING PLAN
SHEET 2-I
IMPACTS

2:\proj_2019\19045\NCS - Dalton\DWG\Wet\Final\19045_Wet_Layouts-30.dwg, 2-I-A, 11/28/2023 3:54:11 PM

© 2023
horizons Engineering
All rights reserved

MATCH LINE - SHEET 4

MATCH LINE - SHEET 10

MATCH LINE - SHEET 6

APPROXIMATE LIMITS OF DELINEATION

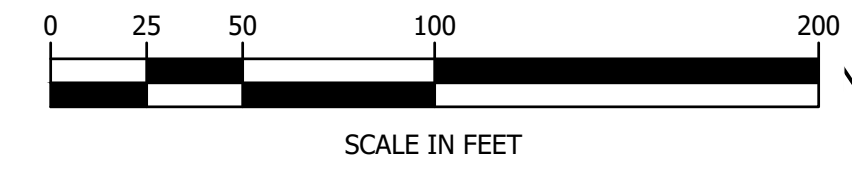
- EXISTING LOT LINE
- SUBJECT PROPERTY BOUNDARY LINE
- WATERSHED BOUNDARY
- VERNAL POOL

LEGEND

- PERENNIAL STREAM
- INTERMITTENT STREAM
- EPHEMERAL FLOW
- WETLAND DELINEATION LINE
- WETLAND CLASSIFICATION

- GRAVEL ROAD
- MINOR CONTOUR (2')
- MAJOR CONTOUR (10')
- APPROXIMATE LOCATIONS (NOT FLAGGED)
- WETLAND AREA
- PERENNIAL STREAM
- INTERMITTENT STREAM
- EPHEMERAL FLOW

- BEAVER DAM
- UPLAND
- GROUNDWATER SEEP
- FLAG POINT AND ID # (STRING# & FLAG #)

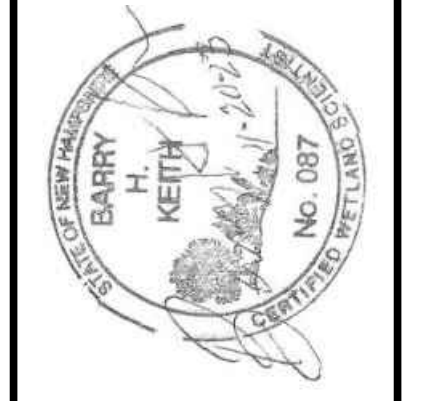


DATE OF PRINT
 NOVEMBER 28 2023
 HORIZONS ENGINEERING

© 2023
 horizons
 Engineering
 All rights reserved

NO.	DATE	REVISION DESCRIPTION
1	03/2021	IMPACT EDITS PER DESIGN CHANGES

PROJECT #:	19045
DATE:	NOVEMBER 2023
SURVEYED BY:	HEI
ENGINEERED BY:	BHK
DRAWN BY:	SJB/BDD/KRP
CHECKED BY:	ESP/BHK

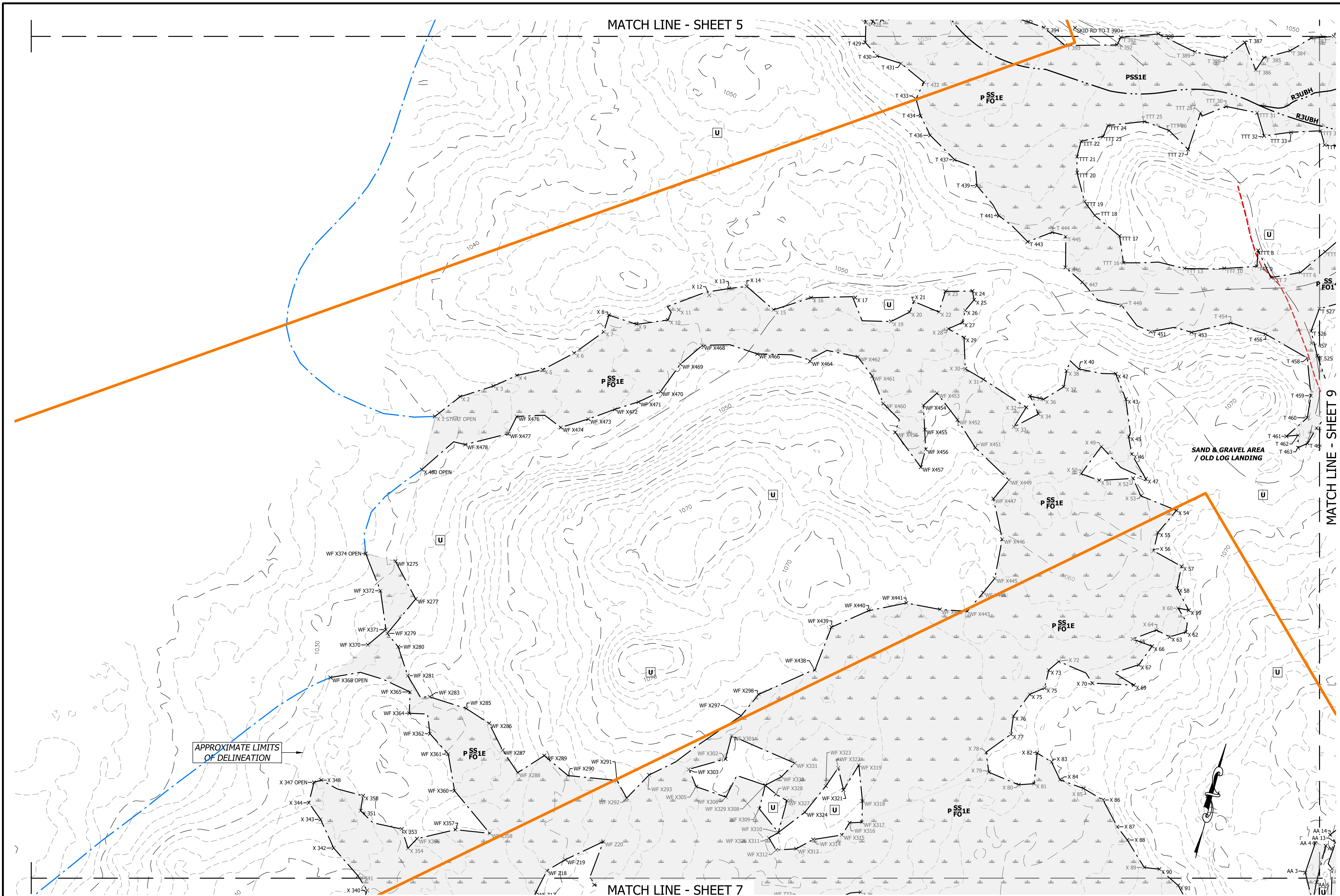


horizons
 Engineering
 Engineering - Land Surveying - Environmental
 MAINE • NEW HAMPSHIRE • VERMONT
 www.horizonsengineering.com

GRANITE STATE LANDFILL, LLC
 DALTON, NEW HAMPSHIRE
 WETLAND IMPACT PLANS
 WETLAND MAPPING PLAN

SHEET 5-I
 NO IMPACT

Z:\proj_2019\19045_NCS - Dalton\DWG\Wet\19045_Wet_Layouts\20.dwg, 5-11/28/2023 3:54:38 PM

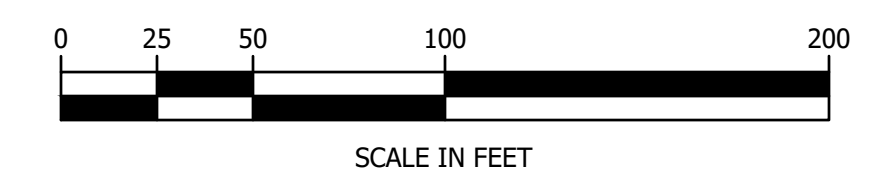


APPROXIMATE LIMITS OF DELINEATION

- - - - - SKID ROAD (PER AERIAL PHOTOGRAPHY)
- - - - - LIMIT OF EXCAVATION (PERM. IMPACT)
- - - - - LIMIT OF DISTURBANCE (TEMP. IMPACT)
- - - - - EXISTING LOT LINE
- - - - - SUBJECT PROPERTY BOUNDARY LINE
- - - - - ANCHOR TRENCH BOUNDARY (LIMIT OF WASTE)
- PERMANENT WETLAND IMPACT
- TEMPORARY WETLAND IMPACT
- EXISTING WETLAND IMPACT FOR AFTER THE FACT PERMIT

- LEGEND**
- - - - - PERENNIAL STREAM
 - - - - - INTERMITTENT STREAM
 - - - - - EPHEMERAL FLOW
 - - - - - FLOW DIRECTION
 - - - - - WETLAND DELINEATION LINE
 - - - - - WETLAND CLASSIFICATION
 - - - - - GRAVEL ROAD
 - - - - - MINOR CONTOUR (2')
 - - - - - MAJOR CONTOUR (10')
 - - - - - APPROXIMATE LOCATIONS (NOT FLAGGED)
 - - - - - WETLAND AREA
 - - - - - PERENNIAL STREAM
 - - - - - INTERMITTENT STREAM
 - - - - - EPHEMERAL FLOW
 - - - - - BEAVER DAM
 - - - - - UPLAND
 - - - - - MONITORING WELL
 - - - - - GROUNDWATER SEEP
 - - - - - FLAG POINT AND ID # (STRING# & FLAG #)

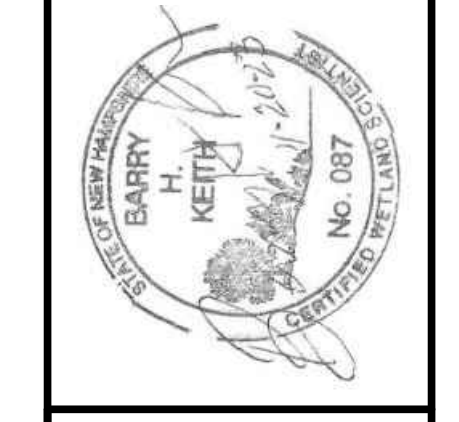
- - - - - PERENNIAL STREAM
- - - - - INTERMITTENT STREAM
- - - - - EPHEMERAL FLOW
- - - - - BEAVER DAM
- - - - - UPLAND
- - - - - MONITORING WELL
- - - - - GROUNDWATER SEEP
- - - - - FLAG POINT AND ID # (STRING# & FLAG #)



DATE OF PRINT
 NOVEMBER 28 2023
 HORIZONS ENGINEERING



PROJECT #:	NO.	DATE	REVISION DESCRIPTION
19045			
DATE:	NOVEMBER 2023		
SURVEYED BY:	HEI		
ENGINEERED BY:	BHK		
DRAWN BY:	SJB/BDD/KRP		
CHECKED BY:	ESP/BHK		



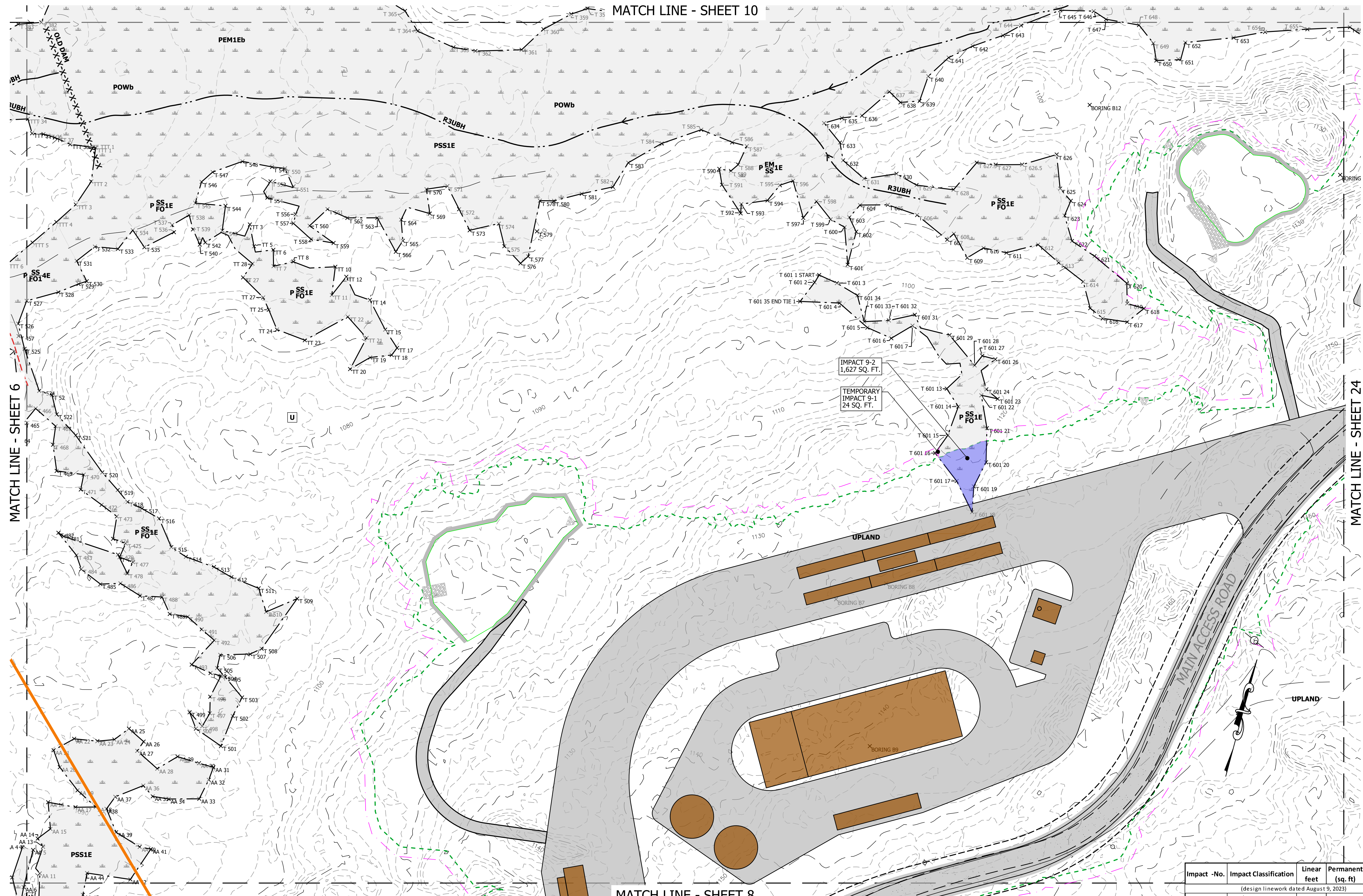
horizons Engineering
 Engineering - Land Surveying - Environmental
 MAINE • NEW HAMPSHIRE • VERMONT
 www.horizonsengineering.com

GRANITE STATE LANDFILL, LLC
 DALTON, NEW HAMPSHIRE
 WETLAND IMPACT PLANS
 WETLAND MAPPING PLAN

SHEET 6
NO IMPACTS

2:\proj_2019\19045\NCS - Dalton\DWG\Final\19045_Wet_Layouts-20.dwg, 6-11/28/2023 3:54:52 PM

MATCH LINE - SHEET 10



MATCH LINE - SHEET 6

MATCH LINE - SHEET 24

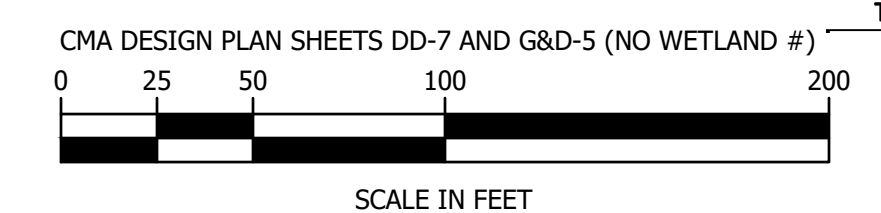
MATCH LINE - SHEET 8

- SKID ROAD (PER AERIAL PHOTOGRAPHY)
- LIMIT OF EXCAVATION (PERM. IMPACT)
- LIMIT OF DISTURBANCE (TEMP. IMPACT)
- EXISTING LOT LINE
- SUBJECT PROPERTY BOUNDARY LINE
- ANCHOR TRENCH BOUNDARY (LIMIT OF WASTE)
- PERMANENT WETLAND IMPACT
- TEMPORARY WETLAND IMPACT
- EXISTING WETLAND IMPACT FOR AFTER THE FACT PERMIT

- LEGEND**
- PERENNIAL STREAM
 - INTERMITTENT STREAM
 - EPHEMERAL FLOW
 - FLOW DIRECTION
 - WETLAND DELINEATION LINE
 - WETLAND CLASSIFICATION

- GRAVEL ROAD
- MINOR CONTOUR (2')
- MAJOR CONTOUR (10')
- APPROXIMATE LOCATIONS (NOT FLAGGED)
- WETLAND AREA
- PERENNIAL STREAM
- INTERMITTENT STREAM
- EPHEMERAL FLOW
- X-X-X-X-X- BEAVER DAM
- U UPLAND
- MONITORING WELL
- GROUNDWATER SEEP
- 46-8-X FLAG POINT AND ID # (STRING # & FLAG #)
- AA-15X

- IMPACT 9-2 1,627 SQ. FT.
- TEMPORARY IMPACT 9-1 24 SQ. FT.



Impact -No.	Impact Classification	Linear feet	Permanent (sq. ft)	Temporary (sq. ft.)
9-1	P SS/FO 1E			24
9-2	P SS/FO 1E		1,627	
Totals			1,627	24

(design linework dated August 9, 2023)

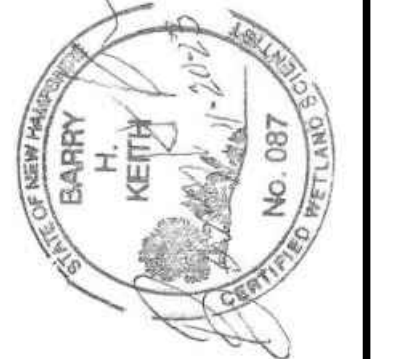
DATE OF PRINT
NOVEMBER 28 2023
HORIZONS ENGINEERING



PROJECT #:	DATE:	NO.	REVISION DESCRIPTION
19045 <td>NOVEMBER 2023 <td>1 <td>ADDED WETLAND IMPACTS </td></td></td>	NOVEMBER 2023 <td>1 <td>ADDED WETLAND IMPACTS </td></td>	1 <td>ADDED WETLAND IMPACTS </td>	ADDED WETLAND IMPACTS

ENGINEERED BY:	DRAWN BY:	CHECKED BY:
HEI	SJB/BDD/KRP	ESP/BHK

ENG DWG	BHK	KRP

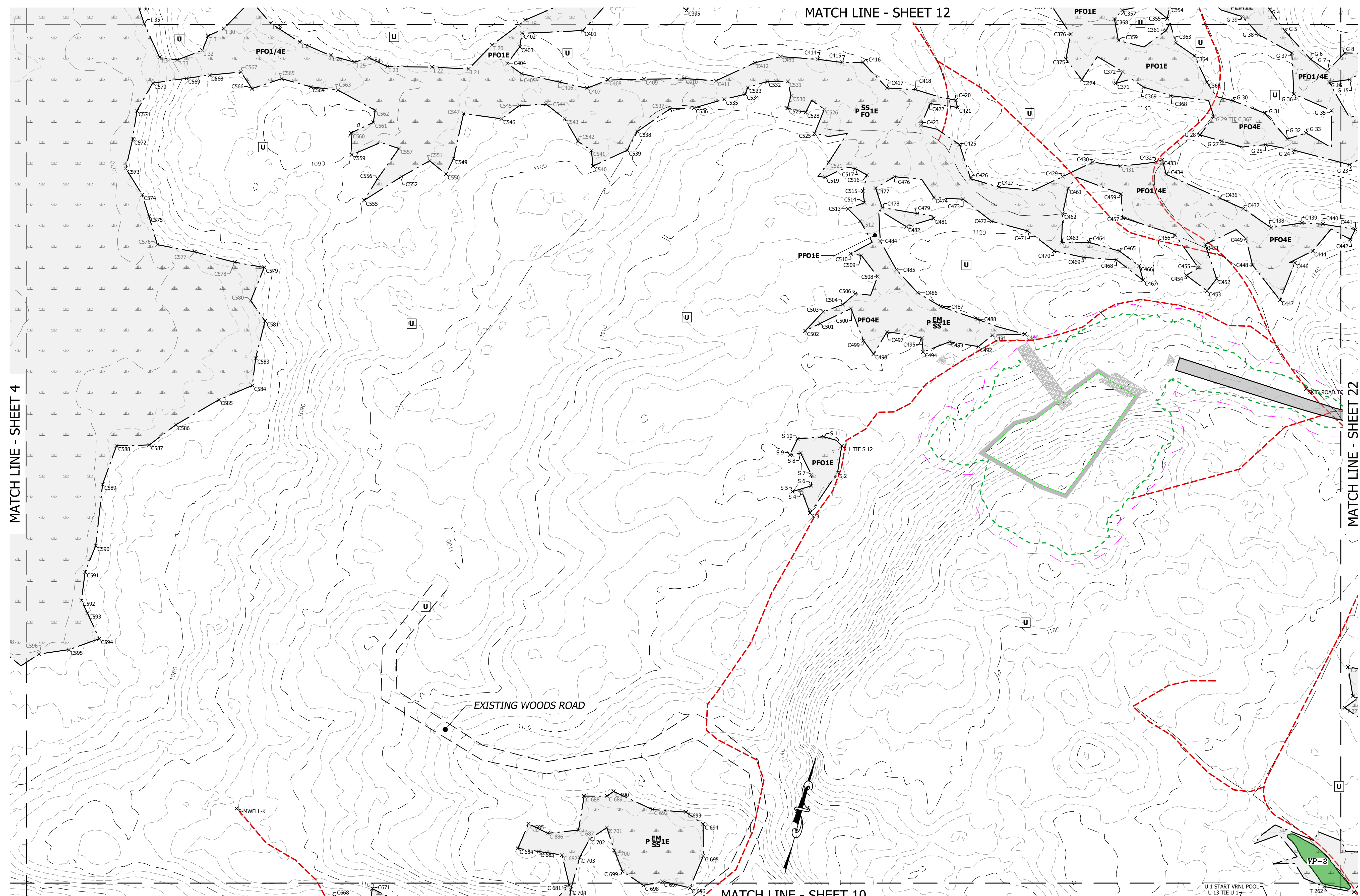


horizons Engineering
Engineering - Land Surveying - Environmental
MAINE • NEW HAMPSHIRE • VERMONT
www.horizonsengineering.com

GRANITE STATE LANDFILL, LLC
DALTON, NEW HAMPSHIRE
WETLAND IMPACT PLANS
WETLAND MAPPING PLAN

SHEET 9-I
IMPACTS

2:\proj_2019\19045\NCS - Dalton\DWG\Final\19045_Wet_Layouts-20.dwg, 9-11, 11/28/2023 3:55:30 PM



MATCH LINE - SHEET 4

MATCH LINE - SHEET 12

MATCH LINE - SHEET 22

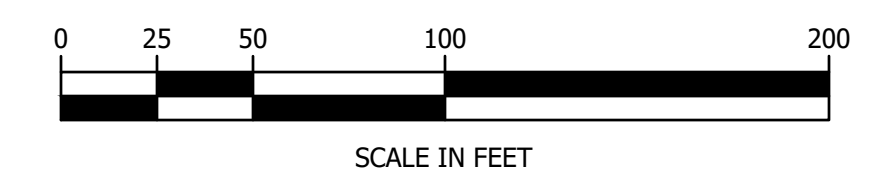
MATCH LINE - SHEET 10

- - - - - EXISTING LOT LINE
- - - - - SUBJECT PROPERTY BOUNDARY LINE
- - - - - WATERSHED BOUNDARY
- VERNAL POOL

- LEGEND**
- PERENNIAL STREAM
 - - - - - INTERMITTENT STREAM
 - - - - - EPHEMERAL FLOW
 - FLOW DIRECTION
 - - - - - WETLAND DELINEATION LINE
 - PSS1E WETLAND CLASSIFICATION

- - - - - GRAVEL ROAD
- - - - - MINOR CONTOUR (2')
- - - - - MAJOR CONTOUR (10')
- APPROXIMATE LOCATIONS (NOT FLAGGED)
- WETLAND AREA
- - - - - PERENNIAL STREAM
- - - - - INTERMITTENT STREAM
- - - - - EPHEMERAL FLOW

- X-X-X-X-X- BEAVER DAM
- U UPLAND
- GW SEEP GROUNDWATER SEEP
- 46-8-X AA-15X FLAG POINT AND ID # (STRING# & FLAG #)

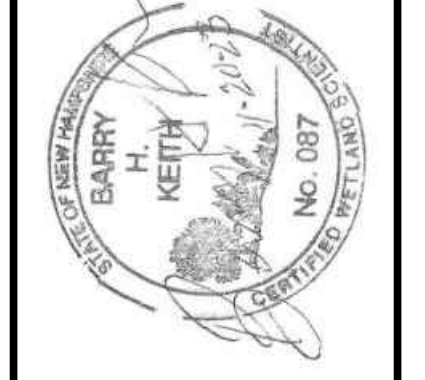


DATE OF PRINT
NOVEMBER 28 2023
HORIZONS ENGINEERING



NO.	DATE	REVISION DESCRIPTION
1	03/2021	IMPACT EDITS PER DESIGN CHANGES

PROJECT #:	19045
DATE:	NOVEMBER 2023
SURVEYED BY:	HEI
ENGINEERED BY:	BHK
DRAWN BY:	SJB/BDD/KRP
CHECKED BY:	ESP/BHK



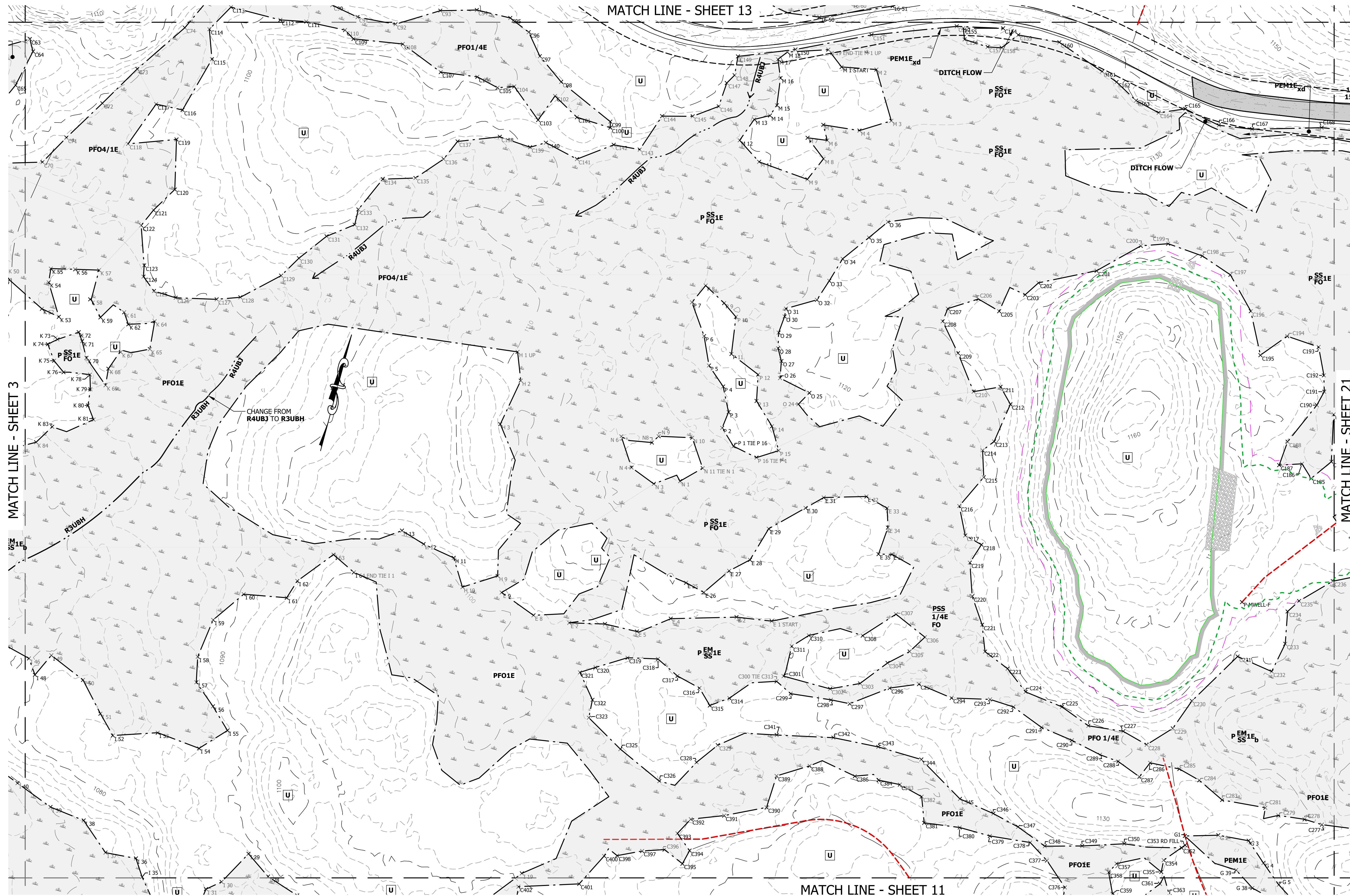
horizons Engineering
 Engineering - Land Surveying - Environmental
 MAINE • NEW HAMPSHIRE • VERMONT
 www.horizonsengineering.com

GRANITE STATE LANDFILL, LLC
 DALTON, NEW HAMPSHIRE
 WETLAND IMPACT PLANS
 WETLAND MAPPING PLAN

SHEET 11
NO IMPACTS

2:\proj_2019\19045\NCS - Dalton\DWG\Main\19045_Wet_Layouts\20.dwg, 11/11/2023 3:56:03 PM

MATCH LINE - SHEET 13



MATCH LINE - SHEET 3

MATCH LINE - SHEET 21

MATCH LINE - SHEET 11

- SKID ROAD (PER AERIAL PHOTOGRAPHY)
- LIMIT OF EXCAVATION (PERM. IMPACT)
- LIMIT OF DISTURBANCE (TEMP. IMPACT)
- EXISTING LOT LINE
- SUBJECT PROPERTY BOUNDARY LINE
- ANCHOR TRENCH BOUNDARY (LIMIT OF WASTE)

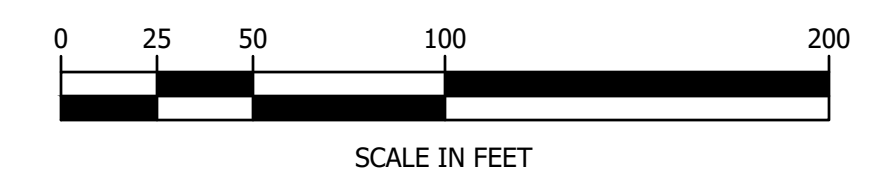
- PERMANENT WETLAND IMPACT
- TEMPORARY WETLAND IMPACT
- EXISTING WETLAND IMPACT FOR AFTER THE FACT PERMIT

LEGEND

- PERENNIAL STREAM
- INTERMITTENT STREAM
- EPHEMERAL FLOW
- FLOW DIRECTION
- WETLAND DELINEATION LINE
- WETLAND CLASSIFICATION

- GRAVEL ROAD
- MINOR CONTOUR (2')
- MAJOR CONTOUR (10')
- APPROXIMATE LOCATIONS (NOT FLAGGED)
- WETLAND AREA
- PERENNIAL STREAM
- INTERMITTENT STREAM
- EPHEMERAL FLOW

- X-X-X-X-X BEAVER DAM
- U UPLAND
- M MONITORING WELL
- G GROUNDWATER SEEP
- FLAG POINT AND ID # (STRING # & FLAG #)



DATE OF PRINT
 NOVEMBER 28 2023
 HORIZONS ENGINEERING



NO.	DATE	REVISION DESCRIPTION
1	03/2021	IMPACT EDITS PER DESIGN CHANGES



horizons Engineering
 Engineering - Land Surveying - Environmental
 MAINE • NEW HAMPSHIRE • VERMONT
 www.horizonsengineering.com

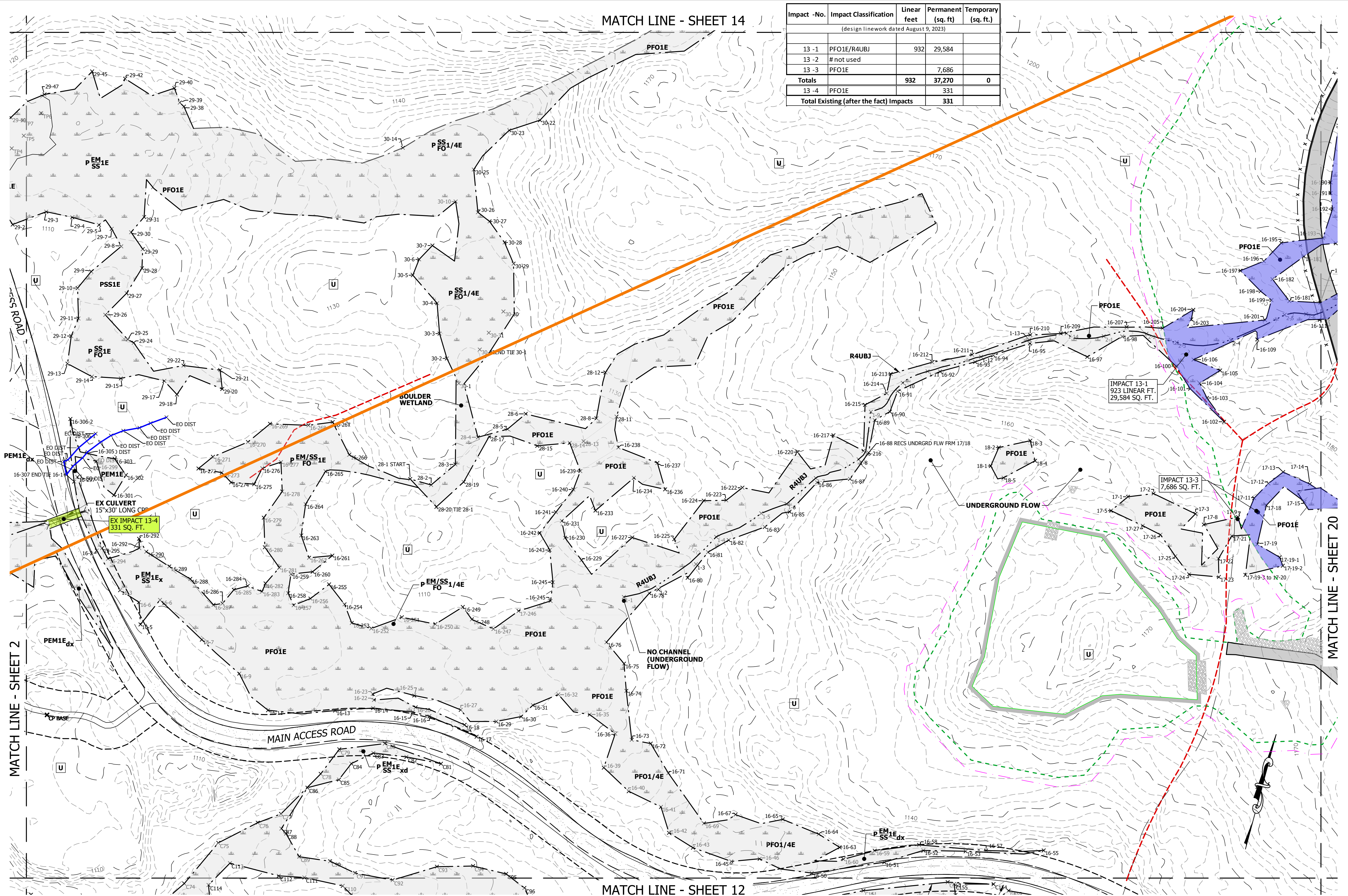
GRANITE STATE LANDFILL, LLC
 DALTON, NEW HAMPSHIRE
 WETLAND IMPACT PLANS
 WETLAND MAPPING PLAN

SHEET 12
NO IMPACTS

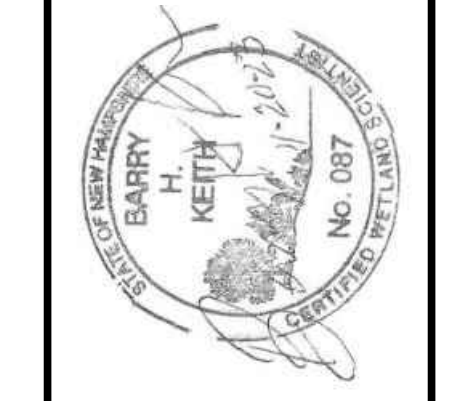
2:\proj_2019\19045\NCS - Dalton\DWG\Final\19045_Wet_Layouts-20.dwg, 12/11/2023 3:56:13 PM

MATCH LINE - SHEET 14

Impact -No.	Impact Classification	Linear feet	Permanent (sq. ft)	Temporary (sq. ft.)
13 -1	PFO1E/R4UBJ	932	29,584	
13 -2	# not used			
13 -3	PFO1E		7,686	
Totals		932	37,270	0
13 -4	PFO1E		331	
Total Existing (after the fact) Impacts			331	



NO.	DATE	REVISION DESCRIPTION
1	03/2021	ADDED EXISTING WETLAND DISTURBANCES FOR AFTER THE FACT PERMIT
1	03/2021	IMPACT EDITS PER DESIGN CHANGES

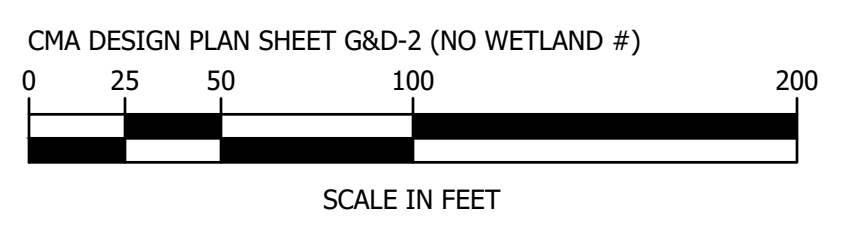


horizons
Engineering
Engineering - Land Surveying - Environmental
MAINE • NEW HAMPSHIRE • VERMONT
www.horizonsengineering.com

GRANITE STATE LANDFILL, LLC
DALTON, NEW HAMPSHIRE
WETLAND IMPACT PLANS
WETLAND MAPPING PLAN
SHEET 13-I
IMPACTS

LEGEND

EXISTING LOT LINE	PERENNIAL STREAM	GRAVEL ROAD	BEAVER DAM
SUBJECT PROPERTY BOUNDARY LINE	INTERMITTENT STREAM	MINOR CONTOUR (2')	UPLAND
WATERSHED BOUNDARY	EPHEMERAL FLOW	MAJOR CONTOUR (10')	GROUNDWATER SEEP
VERNAL POOL	FLOW DIRECTION	WETLAND DELINEATION LINE	FLAG POINT AND ID # (STRING# & FLAG #)
	WETLAND CLASSIFICATION	APPROXIMATE LOCATIONS (NOT FLAGGED)	
		WETLAND AREA	
		PERENNIAL STREAM	
		INTERMITTENT STREAM	
		EPHEMERAL FLOW	



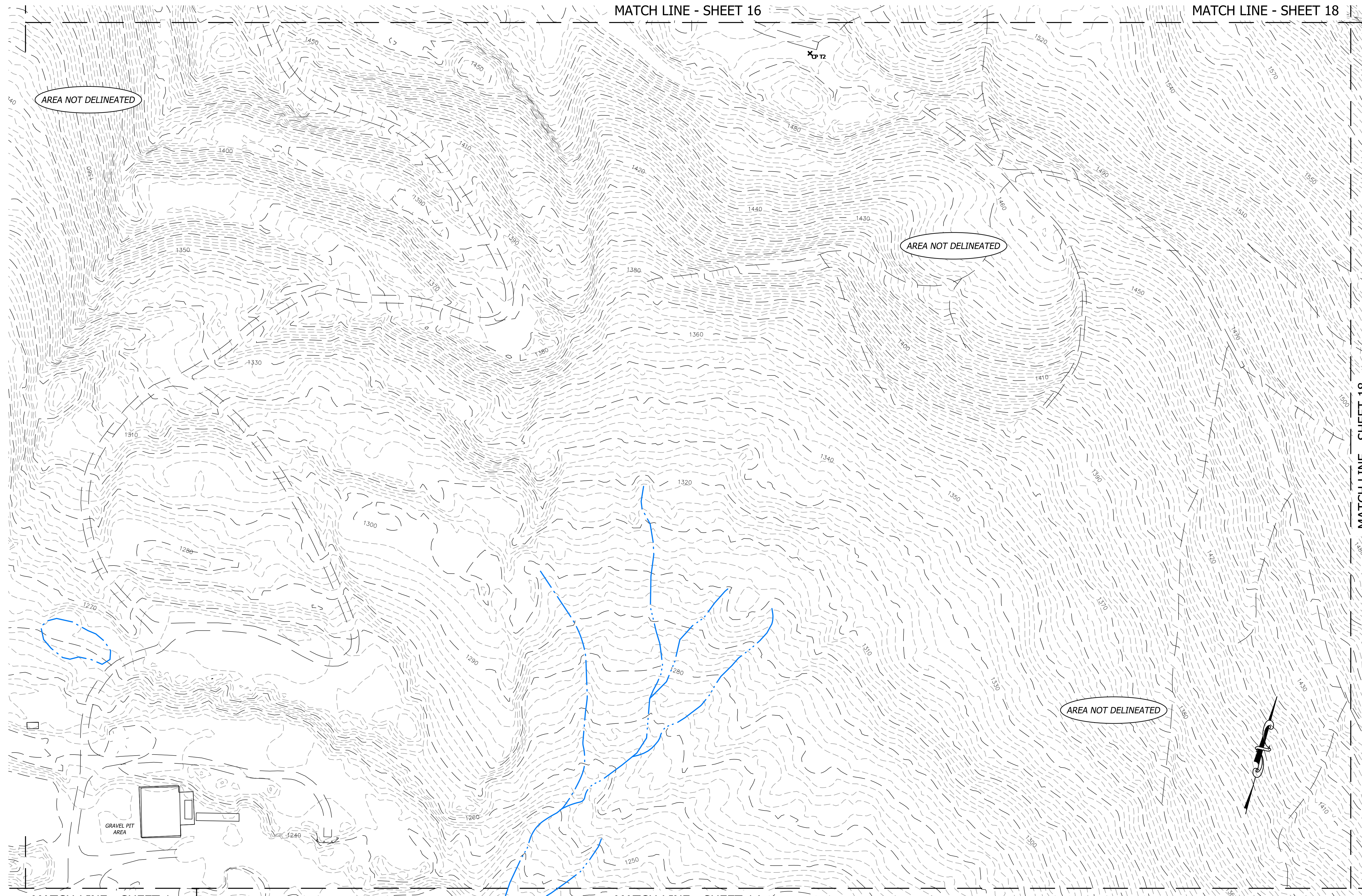
DATE OF PRINT
NOVEMBER 28 2023
HORIZONS ENGINEERING



2:\proj_2019\19045\NCS - Dalton\DWG\Final\19045_Wet_Layouts\30.dwg, 13-I, 11/28/2023 3:56:27 PM

MATCH LINE - SHEET 16

MATCH LINE - SHEET 18



MATCH LINE - SHEET 18

MATCH LINE - SHEET 1

MATCH LINE - SHEET 14

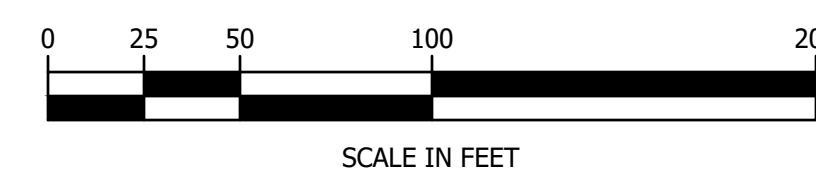
- SKID ROAD (PER AERIAL PHOTOGRAPHY)
- LIMIT OF EXCAVATION (PERM. IMPACT)
- LIMIT OF DISTURBANCE (TEMP. IMPACT)
- EXISTING LOT LINE
- SUBJECT PROPERTY BOUNDARY LINE
- ANCHOR TRENCH BOUNDARY (LIMIT OF WASTE)
- PERMANENT WETLAND IMPACT
- TEMPORARY WETLAND IMPACT
- EXISTING WETLAND IMPACT FOR AFTER THE FACT PERMIT

LEGEND

- PERENNIAL STREAM
- INTERMITTENT STREAM
- EPHEMERAL FLOW
- FLOW DIRECTION
- WETLAND DELINEATION LINE
- WETLAND CLASSIFICATION

- GRAVEL ROAD
- MINOR CONTOUR (2')
- MAJOR CONTOUR (10')
- APPROXIMATE LOCATIONS (NOT FLAGGED)
- WETLAND AREA
- PERENNIAL STREAM
- INTERMITTENT STREAM
- EPHEMERAL FLOW

- BEAVER DAM
- UPLAND MONITORING WELL
- GROUNDWATER SEEP
- FLAG POINT AND ID # (STRING# & FLAG #)



DATE OF PRINT
NOVEMBER 28 2023
 HORIZONS ENGINEERING

© 2023
 horizons
 Engineering
 All rights reserved

NO.	DATE	REVISION DESCRIPTION	ENG. DWG.
19045	NOVEMBER 2023		

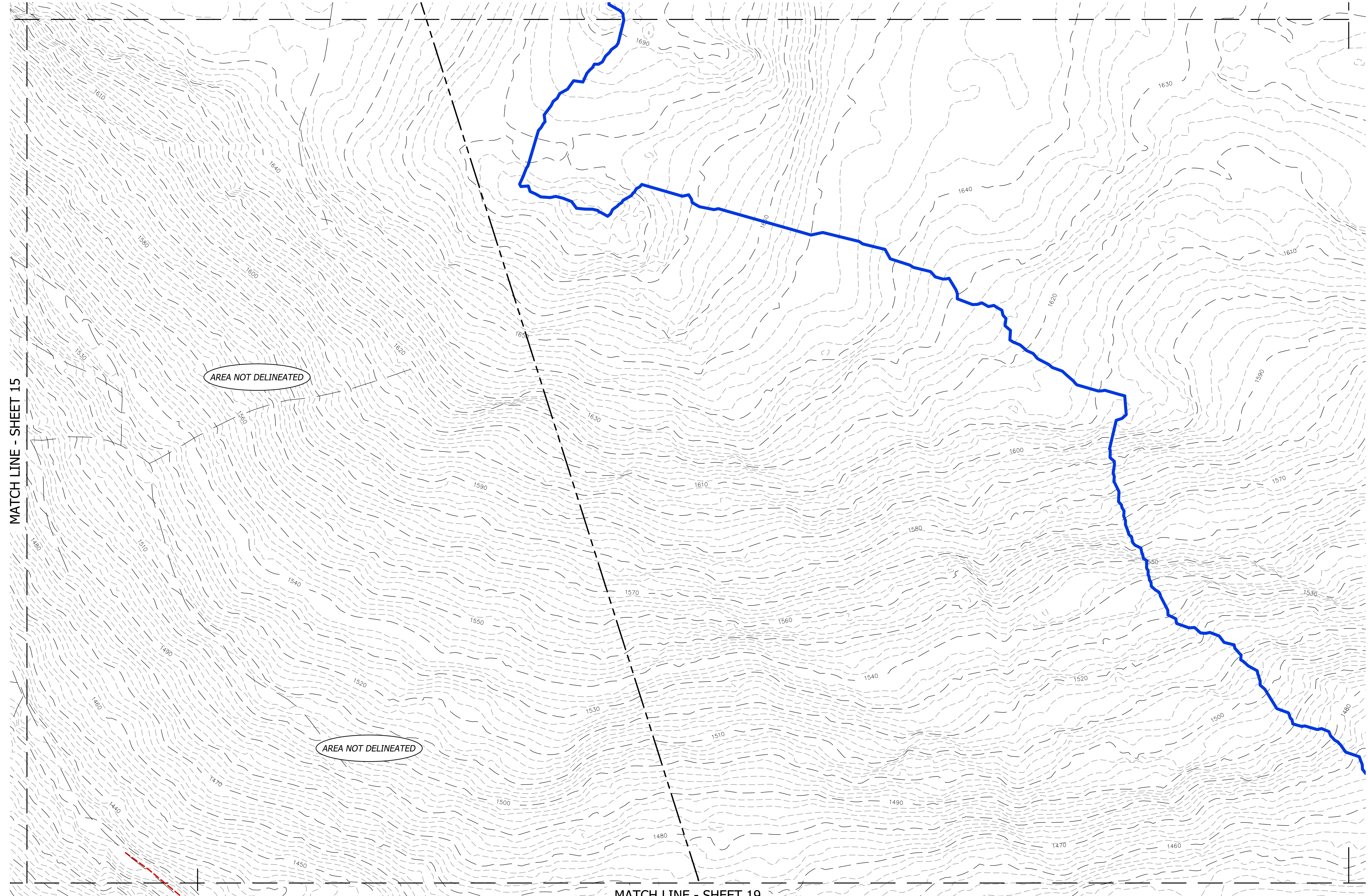


horizons
 Engineering
 Engineering - Land Surveying - Environmental
 MAINE • NEW HAMPSHIRE • VERMONT
 www.horizonsengineering.com

GRANITE STATE LANDFILL, LLC
 DALTON, NEW HAMPSHIRE
WETLAND IMPACT PLANS
 WETLAND MAPPING PLAN

SHEET 15
NO IMPACTS

Z:\proj_2019\19045\NCS - Dalton\DWG\Final\19045_Wet_Layouts\30.dwg, 15-1, 11/28/2023 3:56:52 PM



MATCH LINE - SHEET 15

MATCH LINE - SHEET 19

AREA NOT DELINEATED

AREA NOT DELINEATED

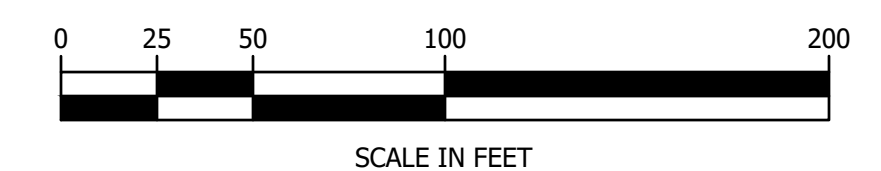
- - - - - SKID ROAD (PER AERIAL PHOTOGRAPHY)
- - - - - LIMIT OF EXCAVATION (PERM. IMPACT)
- - - - - LIMIT OF DISTURBANCE (TEMP. IMPACT)
- — — — — EXISTING LOT LINE
- — — — — SUBJECT PROPERTY BOUNDARY LINE
- - - - - ANCHOR TRENCH BOUNDARY (LIMIT OF WASTE)
- PERMANENT WETLAND IMPACT
- TEMPORARY WETLAND IMPACT
- EXISTING WETLAND IMPACT FOR AFTER THE FACT PERMIT

LEGEND

- — — — — PERENNIAL STREAM
- - - - - INTERMITTENT STREAM
- - - - - EPHEMERAL FLOW
- - - - - FLOW DIRECTION
- - - - - WETLAND DELINEATION LINE
- - - - - WETLAND CLASSIFICATION

- - - - - GRVEL ROAD
- - - - - MINOR CONTOUR (2')
- - - - - MAJOR CONTOUR (10')
- - - - - APPROXIMATE LOCATIONS (NOT FLAGGED)
- - - - - WETLAND AREA
- - - - - PERENNIAL STREAM
- - - - - INTERMITTENT STREAM
- - - - - EPHEMERAL FLOW

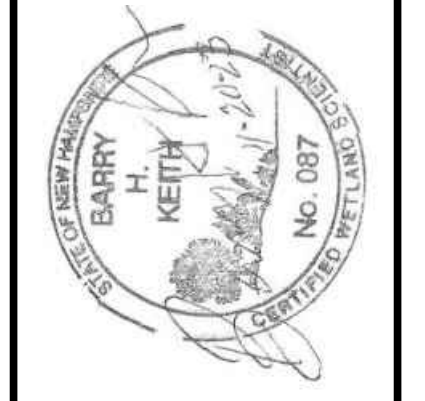
- X-X-X-X-X BEAVER DAM
- U UPLAND
- - - - - MONITORING WELL
- - - - - GROUNDWATER SEEP
- - - - - FLAG POINT AND ID # (STRING# & FLAG #)



DATE OF PRINT
NOVEMBER 28 2023
 HORIZONS ENGINEERING

© 2023
 horizons
 Engineering
 All rights reserved

NO.	DATE	REVISION DESCRIPTION	ENG	DWG



horizons
Engineering

Engineering - Land Surveying - Environmental
 MAINE • NEW HAMPSHIRE • VERMONT
 www.horizonsengineering.com

GRANITE STATE LANDFILL, LLC
 DALTON, NEW HAMPSHIRE
 WETLAND IMPACT PLANS

WETLAND MAPPING PLAN

SHEET 18
NO IMPACTS

Z:\proj_2019\19045\NCS - Dalton\DWG\final\19045_Wet_Layouts\20.dwg, 18-1, 11/28/2023 3:57:06 PM

