



2012, FINAL 303(d) List of Impaired Waters Requiring a TMDL



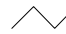
Impaired Waters that Require a TMDL (303(d))

-  Slight Impairment, Marginal Condition
-  More Severe Impairment, Poor Condition

Not Impaired or Impaired but Not Requiring a TMDL



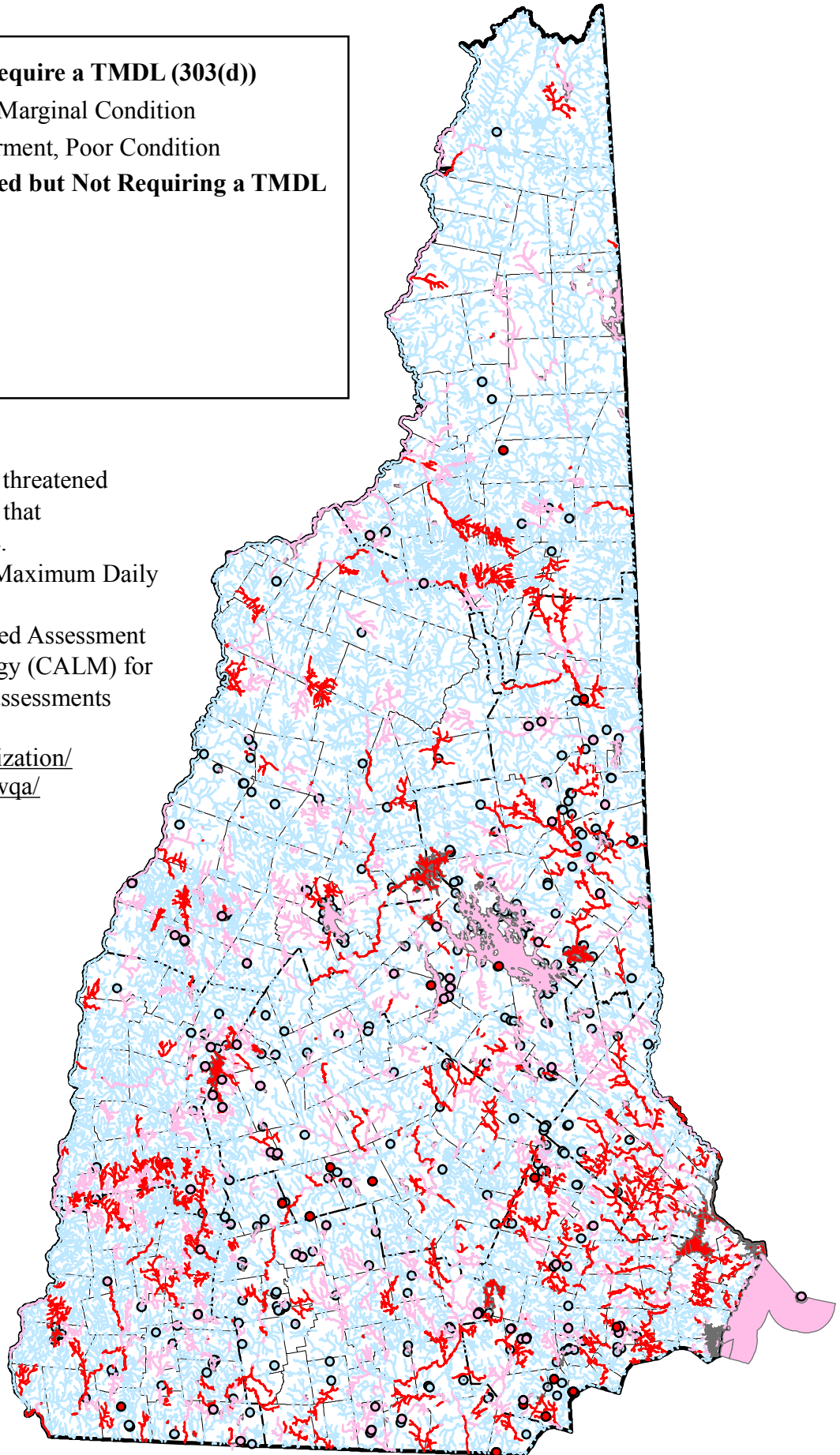
Political Boundaries

-  State boundary
-  County boundary
-  Town boundary

NOTES:

1. This map does not show threatened and/or impaired waters that do not require a TMDL.
2. TMDL stands for Total Maximum Daily Load study.
3. See the 2012 Consolidated Assessment and Listing Methodology (CALM) for details regarding how assessments were made.

<http://des.nh.gov/organization/divisions/water/wmb/swqa/2012/index.htm>



10 5 0 10 20 30 40 Miles

